



Rookwood Weir Water Supply Scheme Landholder Information Session

2 and 3 April 2025

Agenda

Time		Item	Presenter
6:15pm	15 mins	Rookwood Weir (Managibei Gamu) operations	Melanie Sutton
6:30pm	20 mins	Rookwood Weir Environmental Program	Mitch Crane
6:50pm	10 mins	Water lettuce update	Karen Reid
7:00pm	10 mins	Questions	



Rookwood Weir (Managibei Gamu) operations

Melanie Sutton, Operations Manager Lower Fitzroy

Updates and upgrades

- Weir is now business-as-usual
- All wet commissioning completed – this process involved testing weir infrastructure such as pumps and outlet valves
- Fish lock and turtle passage successfully operating
- First customers have taken water
- Fitzroy Barrage fishway completed in October 2024
- Operational support works over the past 12 months have included:
 - weevil breeding bio-facility
 - heli-pad
 - jib cranes
 - wash down bay (in progress)



Public safety

- Weirs can be dangerous and unpredictable as releases can be automatic and from different parts of the weir
- People must remain at least 200 m from weir walls or as signed
- Our goal is to reduce incidents of trespassing and unsafe behaviour at our assets
- We undertake regular patrols and have CCTV onsite, and report incidents of trespassing to the police
- If you see dangerous behaviour or trespassers, please contact police or call our Customer Support team on 13 15 89



Questions?

Rookwood Weir Environmental Program

Mitch Crane, Senior Environmental Business Partner and Paddy Kehoe, Environmental Advisor

Environmental Program overview

- Program ensures compliance with the environmental approval conditions set by the Australian and Queensland governments
- The program has four focus areas:
 - feral pest management
 - water quality monitoring
 - turtle monitoring and nest protection
 - fish monitoring
- Program benefits include:
 - helps landholders' feral pest reduction activities
 - improves riverbank areas
 - facilitates early detection of water quality issues
 - supports native turtle species to navigate their natural environment
 - ensures fish and turtle movements are not impacted by the weir



Rookwood Weir (Managibei Gamu) and the Fitzroy River

Feral pest management update

- Since operations commenced, we have worked with landholders to conduct camera trap surveys in and around turtle nesting sites on the Fitzroy and Mackenzie rivers

Outcomes to date:

- Trial cameras installed on landholder properties in Q4 2024 for 3-5 months
- Multiple target pest species identified at all sites – see images



Feral pest management update cont.

2025 planned activities:

- Planning underway to commence activities, which include:
 - monitoring – cameras to monitor feral pest movement
 - aerial shooting – by helicopters, occurs twice yearly, noting an additional shoot in Q2 2025 is desired to start the program strong
 - baiting – occurs twice yearly along riverbanks, aiming to start in Q3 2025
- Data from last year's surveys is helping to plan priority sites
- If we have an access agreement with you and need access, we will notify you before work starts



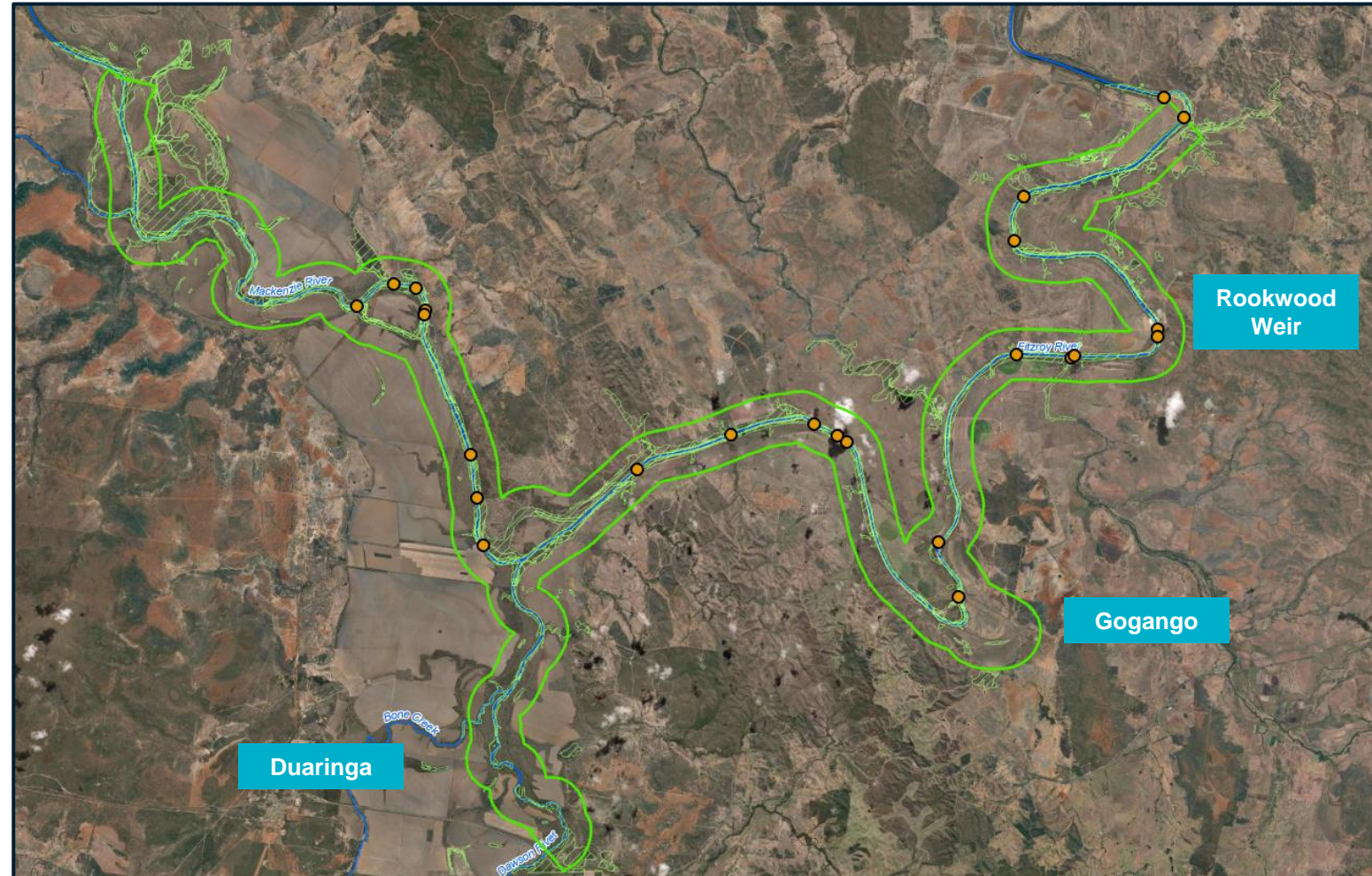
Turtle monitoring and nest protection update

- Last year, we established measures to protect and support the vulnerable Fitzroy River Turtle and the critically endangered White-throated Snapping Turtle
- Measures included:
 - identifying potential turtle nest locations
 - trapping and tagging
 - monitoring the movement of turtles
- Turtles have also been sighted using the turtle ladder

2025 planned activities:

- Nest protection – locating of nests for protection has started and will continue until December
- Monitoring – routine visits March/April to December

Historic turtle nest sites (orange dots) within one kilometre of the riverbanks



Water quality monitoring

2025 planned activities:

- Monthly water quality monitoring continues within the Fitzroy River catchment from Boolburra and Apis creek crossings downstream to Rockhampton
- Access to the river – mostly via public sites
- Work continues with Central Queensland University to build understanding of water quality and assess opportunities for improved monitoring and management options



Fish monitoring update

- Our infrastructure is designed to promote migration of fish up and down stream
- Early results indicate fish are migrating up and down stream using the Rookwood fish lock and new fishway at the Fitzroy Barrage

2025 planned activities:

- We continue to monitor and tag fish upstream and downstream of the weir to assess population diversity, and the effectiveness of the fish passages located at the weir and the Fitzroy Barrage



Paddy with a Spotted Saratoga captured during fish monitoring

Access to landholder property

- Thank you to everyone who has already met with us to discuss land access matters

Next steps

- We will be in touch with relevant landholders over the coming weeks to discuss upcoming environmental program work, land access agreements and conditions
- If we need access to your property and don't yet have an access agreement in place, we will be in touch to seek your written consent. We will meet with you on your property to chat about your requirements and any concerns in detail
- Conditions of land access include vehicle inspections and wash downs as required to manage any biohazard or contaminant concerns
- We will minimise disruption to landholders, and care will be taken in respect of property and livestock
- If you haven't heard from us but are willing to provide access, or have questions about our activities, please get in touch.



Questions?

Water lettuce update

Karen Reid, Environmental Manager Operations

Water lettuce update

The problem:

- 2024 – water lettuce observed upstream of Rookwood Weir (Managibei Gamu) for the first time
- Possible spread from further upstream
- Rapid growth likely due to extended low flows and warm weather with low weevil activity (CSIRO advice)
- Impacts:
 - pumping equipment – blockages
 - visual and public amenity – boating access
 - water quality – no significant impact
- Significant flows have helped to clear
- Significant infestations remain in Melaleuca Creek and the 'Pocket'

Water Lettuce – October 2024:

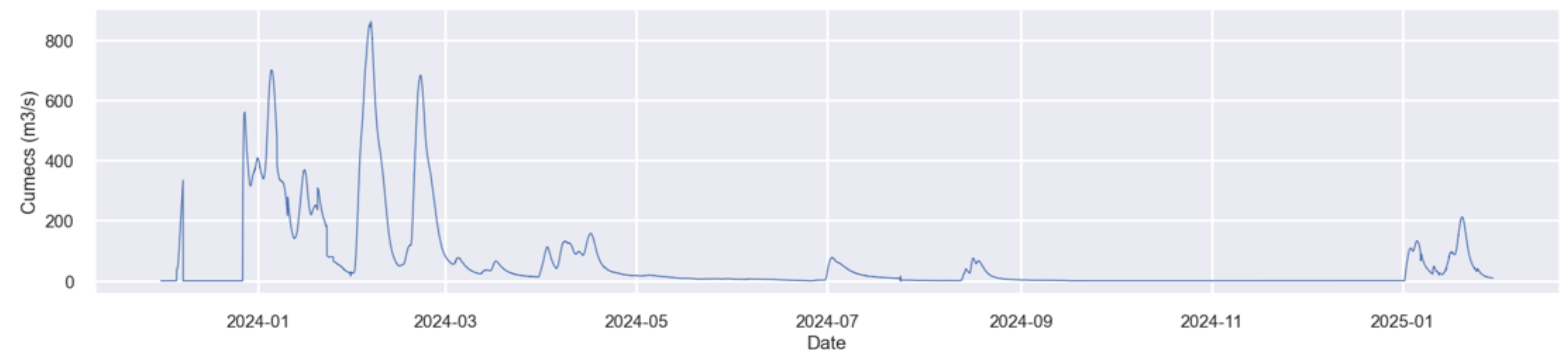


Lower Mackenzie-Dawson River Confluence



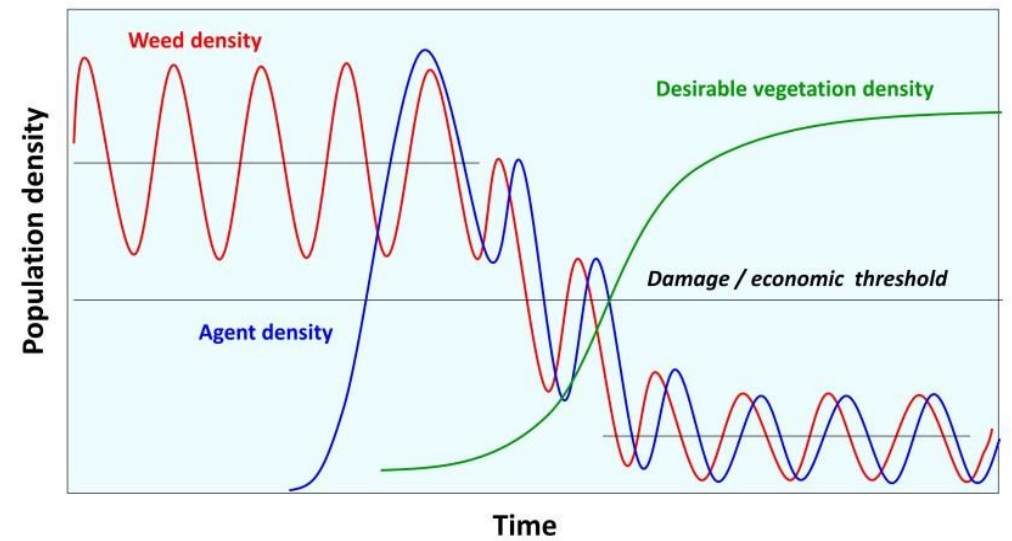
Upper Fitzroy River (Pocket / Yarra Road)

Fitzroy River water flow:



Water lettuce update cont.

- Workshop held in February with Department of Primary Industries, CSIRO (site visit), local councils, Sunwater and Darumbul:
 - Concerns – impacts to landholders, aquatic ecosystems, lack of practical and effective controls
 - Agreement – sustainably manage water lettuce while minimising impacts through accelerated biological control
 - Discussion – council water lettuce weevil program very effective in lower Fitzroy catchment
- Briefing with Donna Kirkland MP around workshop outcomes, with further meetings planned with additional MPs
- Sunwater weevil breeding facility established with Council/CSIRO support for targeted release to local water lettuce = faster control
- Planning for annual stakeholder workshops to review effectiveness of weevil program



Questions?

Delivering water for prosperity